



Participant from the following countries responded to the survey: Ethiopia, Ghana, Ivory Coast, Kenya, Lesotho, Liberia, Malawi, Mozambique, Nigeria, Sierra Leone, Somalia, Tanzania, Uganda, Zambia and Zimbabwe

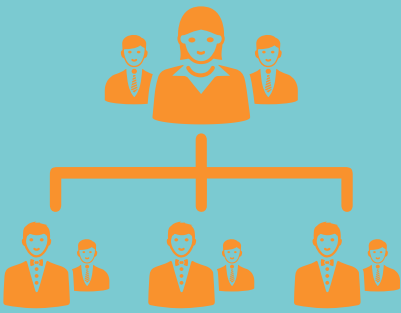


## MAJOR TAKEAWAYS AND EXPERIENCES

- 1 Expert insights on connecting research and policy
- 2 Experience sharing on scaling innovations
- 3 Knowledge exchanges on best practices with peers
- 4 Capacity building on policy formulation and implementation

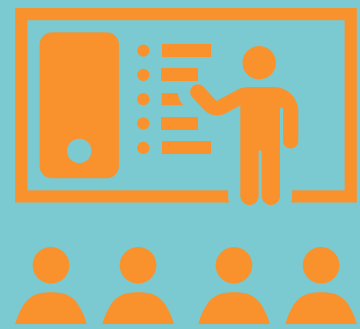


## RELEVANCY AND EXPECTATIONS OF RESEARCH SYMPOSIUM



**97.5%**

of respondents found that the GPE KIX Continental Symposium met or exceeded their expectations



**100%**

of respondents found that the presentations were either relevant or highly relevant in strengthening their knowledge towards KIX thematic areas

## WHAT'S NEXT?



*“What I will do differently is to reorganize staff in my department to start on data collection of learners with disabilities to inform government on their needs.”*

**-Government official  
[Uganda]**

*“[Organizers should] increase sessions of poster presentations of research innovations since they were actively increasing interaction and knowledge sharing between participants.”*

**-Civil Society representative  
[Somalia]**